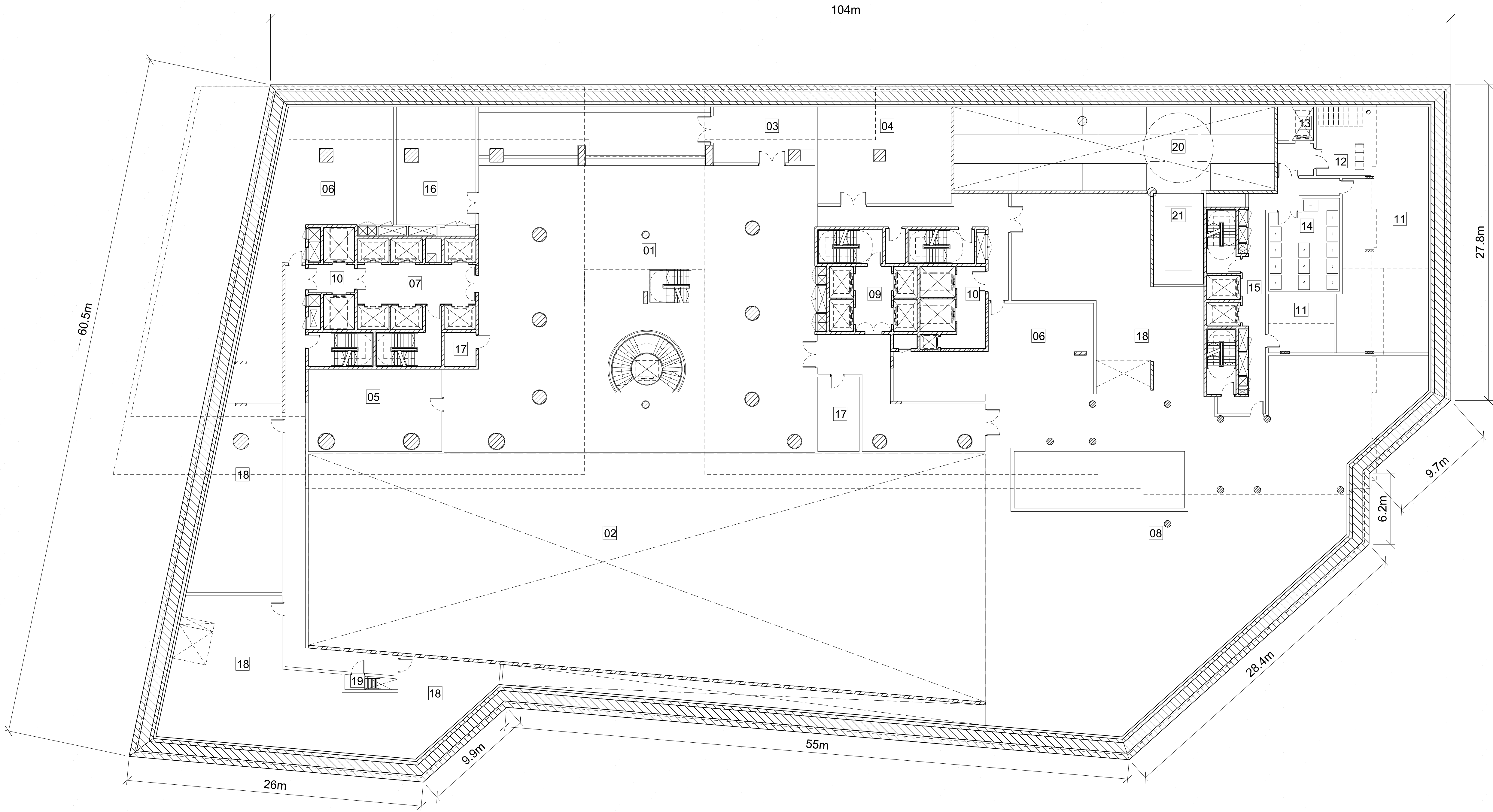


KEY

- 01 HOTEL CONFERENCE PRE-FUNCTION SPACE
- 02 VOID ABOVE CONFERENCE ROOM
- 03 HOTEL BAR STORE
- 04 HOTEL PRE-FUNCTION STAGING AREA
- 05 HOTEL CONFERENCE SPACE CLOAKROOM
- 06 HOTEL BOH
- 07 HOTEL LIFT LOBBY/CORE
- 08 HOTEL GYM & SPA
- 09 SERVICED APARTMENT LIFT LOBBY
- 10 SERVICE LIFT LOBBY

- 11 RESIDENTIAL PLANT ROOM
- 12 RESIDENTIAL CYCLE STORE
- 13 RESIDENTIAL CYCLE LIFT
- 14 RESIDENTIAL BIN STORE
- 15 RESIDENTIAL LIFT LOBBY

- 16 WC
- 17 STORAGE
- 18 PLANT ROOM
- 19 FIRE ESCAPE STAIRCASE
- 20 CARSTACKER
- 21 CAR LIFT

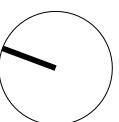


This drawing is copyright.  
Do not scale off dimensions.  
All dimensions to be checked on site by contractor.  
Contractor to report any dimensional discrepancies,  
errors or omissions prior to commencing on site.



NOTE:

NORTH



Rev	Date	Description	Rev	Date	Description
-	15/05/2018	Full Planning Application			
A	11/01/2019	GLA Call In Amendments			

Project Title  
Kensington Forum Hotel  
Kensington, London

Status  
PLANNING

Drawing Title  
Level B1 Floor Plan

Job No	Scale	Date
10106	1:200(A0) NTS(A3)	JAN 2019
Drawing No	Revision	
10106-A-DRG-ZZ-G200-2100-PL	A	

MANCHESTER  
Riverside, 4 Commercial St  
Manchester M3 2AF  
+44 (0)161 835 2345  
mail@simpsonhaugh.com

LONDON  
2nd Roberts Place  
London EC1A 9BB  
+44 (0)20 7586 8600  
mail@simpsonhaugh.com

**simpsonhaugh**